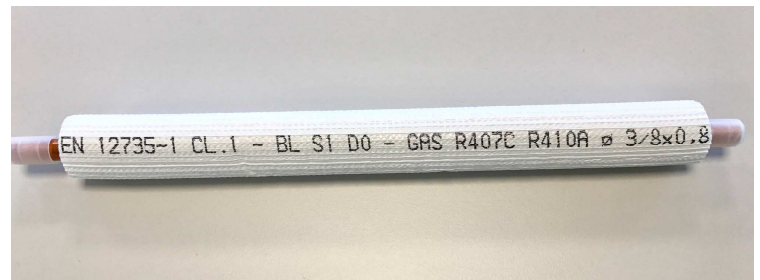
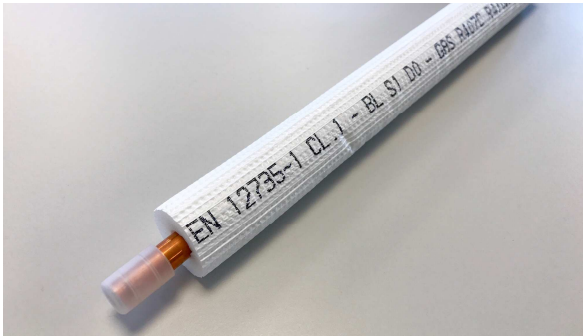


CUPRUMFOMA Spa - Società a socio unico
Capitale sociale Euro 250.000,00 i.v.
C.C.I.A.A. Brescia ITALIA
Isr. Reg. Imp. 04107300982 - REA 588997
Cod. Fiscale e Partita IVA: 04107300982
Cod. IVA CEE: IT 04107300982

Sede legale amministrativa
Via Kennedy, 20
25020 Pralboino (Brescia) ITALIA
Tel. 030/9954378
Fax 030/9954390
pec:cuprumfomaspa@pec.it

Sede operativa e direzione commerciale
Via Caselle, 10
25081 Bedizzole (Brescia) ITALIA
Tel. 030/6871169 - Fax 030/6872100
www.cuprumfoma.it
info@cuprumfoma.it

INSULATED COPPER PIPES SPLIT* BI S1 D0



Copper pipe specification:

Alloy: Copper Cu DHP 99,90 min.
Dimensions and tolerances: according to EN 12735-1
Total residual: < 0,38 mg/dm²
Inside surface smooth and bright.
Physical state: annealed (R220 according to EN12735-1)
Excellent resistance to corrosion.
Suitable for gas R407C, R410A e R32

Insulation specification:

Expanded foamed polyethylene (PE) with closed cells.
Insulation thickness: approx. 6 mm (for Ø 1/4" e 3/8") - 9 mm for all other Ø
Fire reaction according to EN 13501-1: class BL S1 D0.
Odorless and non-toxic – CFC free
Thermal conductivity: λ 0,036 W/(m*K) t at 0° C
Permeability: $\mu \geq 11.000$
Working temperature: -45° + 120°C
Maximum adherence to the pipe in order to guarantee maximum condensation prevention.
Marking on the insulation: "m. – FOMA Frosten*Split EN12735-1 - CL.1 BL S1 D0 –B2 - Ø x W.T. –
GAS R407C R410A – R32 – date"